

# MONTHLY MEMBERSHIP PROGRESS REPORT

LOCATION INDIA

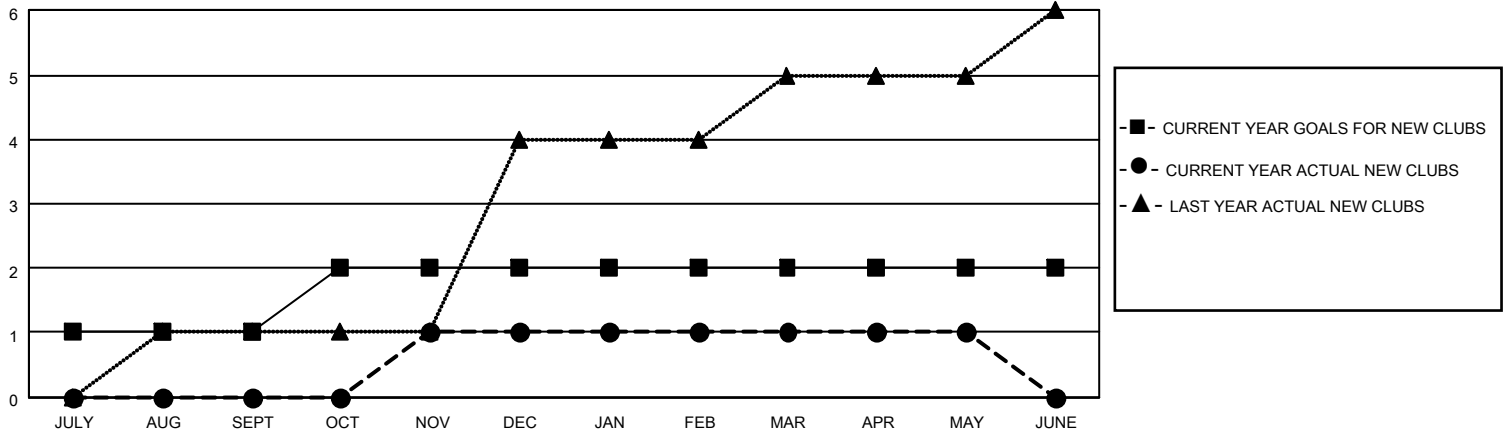
District 316 G

Results as of: 5/31/2022

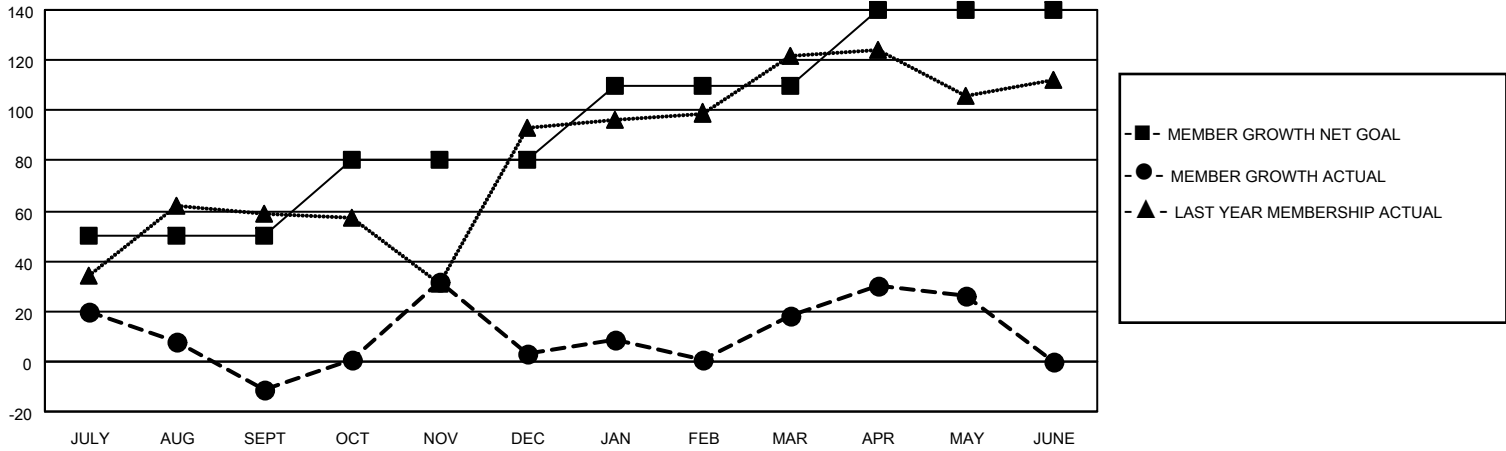
Clubs			
RESULTS FOR 2021-2022			
QUARTER	NEW CLUB GOAL	NEW CLUBS	DROPPED CLUBS
JULY/AUG/SEPT	1	0	3
OCT/NOV/DEC	1	1	0
JAN/FEB/MAR	0	0	1
APR/MAY/JUNE	0	0	0

Members			
RESULTS FOR 2021-2022			
QUARTER	MEMBER GROWTH NET GOAL	MEMBER GROWTH ACTUAL	DROPPED MEMBERS ACTUAL (including transfers)
JULY/AUG/SEPT	50	66	77
OCT/NOV/DEC	30	70	56
JAN/FEB/MAR	30	47	28
APR/MAY/JUNE	30	34	26

**GOALS AND ACTUAL NEW CLUBS CUMULATIVE**



**GOALS AND ACTUAL MEMBERS CUMULATIVE**



<b>DROPPED CLUBS: 4</b>	
<b>DROPPED MEMBERS</b>	
DECEASED	20
CLUB CANCELLED	69
OTHER	98
<b>TOTAL</b>	<b>187</b>

43 CLUBS OF 71 ADDED 1 OR MORE NEW MEMBERS

[CLICK HERE FOR CUMULATIVE MEMBERSHIP DATA](#)

<u>GENDER DISTRIBUTION</u>	
MALE	2,062 (80.93%)
FEMALE	486 (19.07%)
NON BINARY	0 (0.00%)
PREFER NOT TO ANSWER	0 (0.00%)
<b>TOTAL FAMILY UNIT MEMBERS</b>	<b>1,077</b>
<b>FAMILY MEMBERS PAYING HALF DUES</b>	<b>677</b>